



**“You can talk all day long to an engineer about movement, but they’re awestruck when they see it. This is the most exciting tech we’ve had in the last ten years.”**

**- Jason Stroup, Engineering Technician**



**TINKER AIR FORCE BASE**



## **How Motion Amplification® Fits into NAVY Condition Based Maintenance (CBM) Programs**

### **HEALTH MONITORING**

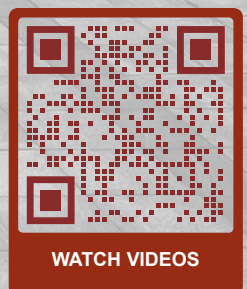
The Iris M® and optional add-ons products is used onboard ships and in shipyards to identify mechanical and structural vibration faults before failures occur.

### **REMOTE AND CONTINUOUS MONITORING**

Increase readiness and availability of Gas Turbines, Diesel Engines, and Generators with automated monitoring, triggering and integration with consolidated machinery assessment (CMAS), data historians, or Artificial Intelligence (AI) driven systems.

### **MAINTENANCE PLANNING AND SCHEDULING**

Condition Assessment Reports enhanced when combining Motion Amplification videos and vibration data to communicate, plan and schedule timely maintenance.



**WATCH VIDEOS**

## TYPICAL SETUP AND WORKFLOW

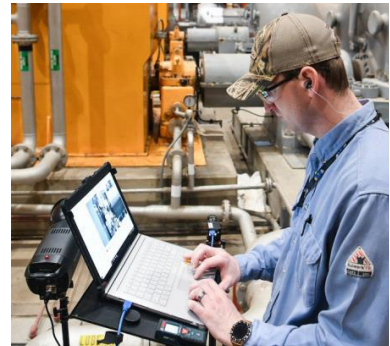
### STEP 1

Setup camera, tripod, and lighting



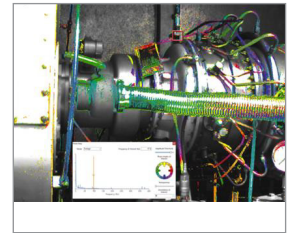
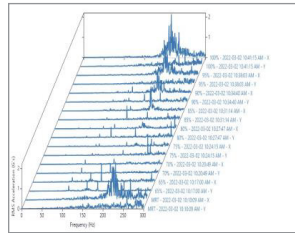
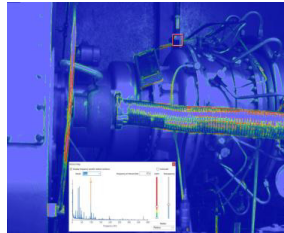
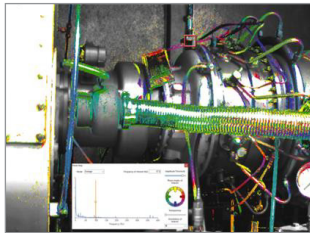
### STEP 2

Record data and videos or perform live Motion Amplification



### STEP 3

Analyzer, filter, annotate and reporting



## Motion Amplification benefits the NAVY

- **Portability**  
Setup & acquire data in minutes, portable and easy to deploy
- **Safety (Non-Contact and Non-Destructive)**  
No surface prep required
- **Millions of sample points**  
2M+ pixels converted to virtual motion sensors
- **100% asset coverage**  
Full-field acquisition vs. single point measurements
- **Live Motion Amplification**  
Apply amplification before acquiring a recording
- **Measure and Visualize**  
Combines vibration, phase data and amplified videos
- **Detect, Visualize, and Solve Problems**  
Effective communication and reporting. Results are immediate and easy to see in a standard video.