



Location: Maryneal, Texas  
Industry: Construction  
Material Manufacturer



**Within just a week of installation, identified a missing roller**

### THE RESULTS

**Operational Efficiency:** Addressing issues promptly helped avoid potential downtimes, ensuring continuous production.

**Cost Savings:** The system's early detection and non-invasive setup significantly cut costs and time typically associated with traditional repair methods.

**Enhanced Plant Safety:** The comprehensive monitoring capability of Iris CM drastically improved safety by reducing the need for extensive manual inspections and repairs.

### THE CHALLENGE

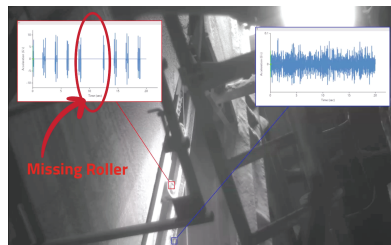
Buzzi Unicem USA faced frequent conveyor roller failures at the Maryneal, Texas plant, which threatened plant safety and disrupted operational flow. These recurrent issues not only hindered production but also required extensive, risky repair operations. Faced with these challenges, the facility sought a cost-effective solution.

### THE SOLUTION

In March 2024, Buzzi Unicem USA installed the RDI Technologies' Iris Continuous Monitoring (Iris CM™) system during a scheduled downtime, ensuring seamless integration without operational interruptions. RDI Services enhanced the setup with weekly remote data analysis, equipping Buzzi Unicem USA with actionable insights for preemptive maintenance.

With the Iris CM data, Buzzi Unicem USA was able to:

- Detect the conveyor's problem early on before further costly repairs were preformed
- Identify the issue quickly to enable maintenance during a scheduled window.



Before: A missing roller will show a gap in the time waveform.



After: The broken roller section was replaced, the waveform data shows that all rollers are present.



**Click or Scan  
to View the  
Video Results**